



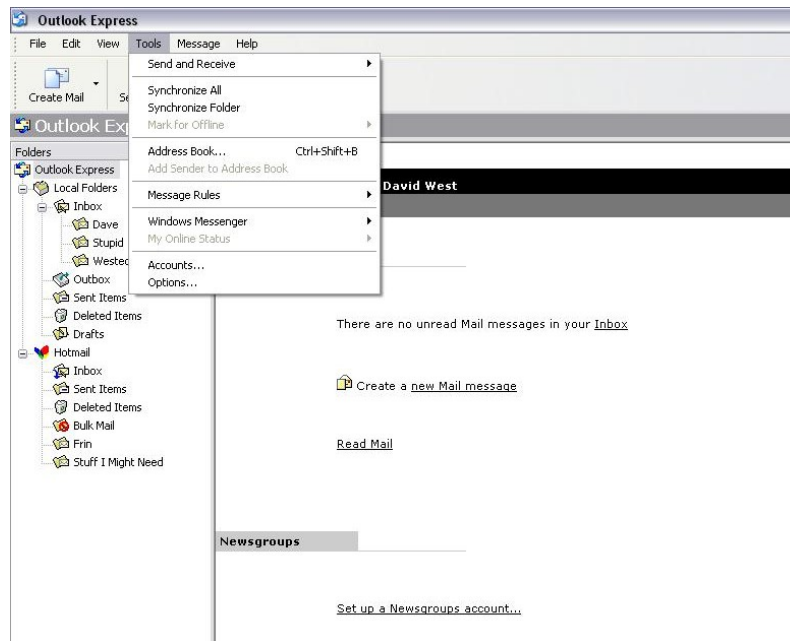
Setting up Outlook Express to automatically dial up to collect email

(V 1.0)



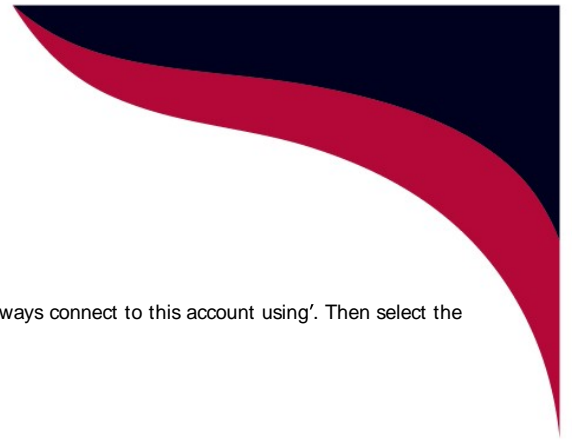
Open Outlook Express

Click on Tools, then Accounts

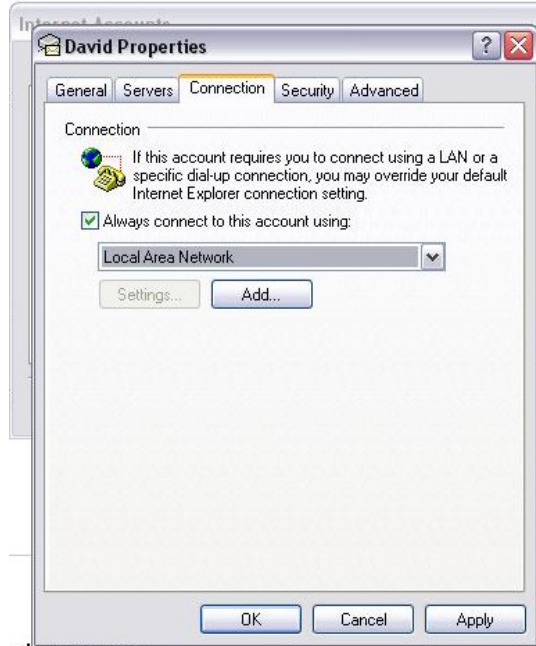


In the window that opens select the tab 'Mail' then select your main account, then click 'Properties'





In the new window that opens select the 'Connection' tab and tick the box 'Always connect to this account using'. Then select the connection you wish to use (most likely speedtouch 330, or dial up modem)



e Address Book...

Then click OK and Close on the next window.

When you click send and receive Outlook Express will automatically connect to the internet and collect your mail and send any mails in your outbox.