



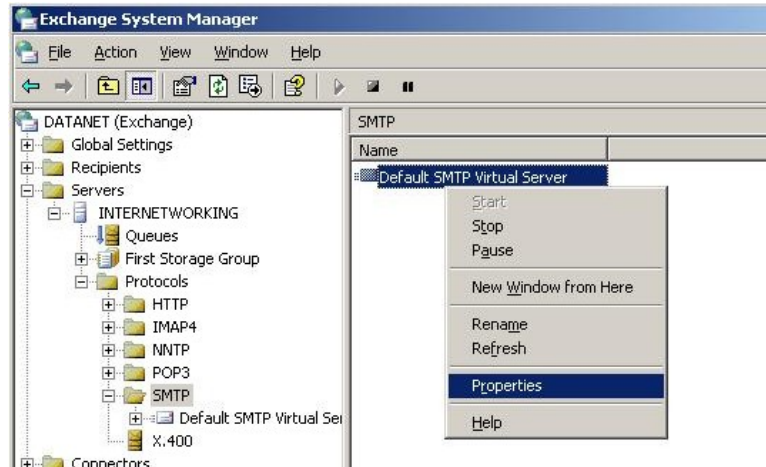
## **Exchange 2003**

# **Setting your outbound email domain and using Datanet as a smart host**

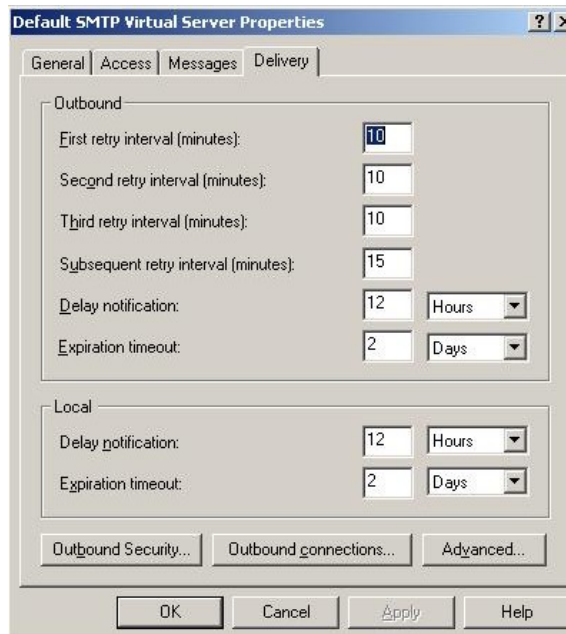
(V 1.1)

In this walk through we will be calling the Exchange 2003 server INTERNETWORKING, so when seen this will need to be replaced with your servers name

Again go into the Exchange System Manager this time navigating to Servers, INTERNETWORKING, Protocols, SMTP. Now right click on 'Default SMTP Virtual Server' and select 'Properties'.



On the next window select the Delivery tab and press the 'Advanced' button at the bottom



In the Fully-qualified domain name box enter **your domain** name and in the Smart host box enter smtp.datanet.co.uk  
No click 'OK'

The 'Advanced Delivery' dialog box contains the following fields and controls:

- Maximum hop count: 10
- Masquerade domain: (empty)
- Fully-qualified domain name: datanet.co.uk (with a 'Check DNS' button)
- Smart host: smtp.datanet.co.uk
- Perform reverse DNS lookup on incoming messages
- Configure external DNS Servers: (with a 'Configure...' button)
- Buttons: OK, Cancel, Help

Now go to the Messages tab. In the 'Send copy of Non-Delivery Report to' enter an email (e.g. admin@YourDomain.co.uk) where you would like a message sent to inform you that someone has sent an email to an email address that doesn't exist.

The 'Default SMTP Virtual Server Properties' dialog box, Messages tab, contains the following fields and controls:

- Specify the following messaging information:
  - Limit message size to (KB): 4096
  - Limit session size to (KB): 10240
  - Limit number of messages per connection to: 20
  - Limit number of recipients per message to: 64000
- Send copy of Non-Delivery Report to: admin@datanet.co.uk
- Badmail directory: C:\Program Files\Exchsrvr\Mailroot\vsi 1\BadMail (with a 'Browse...' button)
- Queue directory: C:\Program Files\Exchsrvr\Mailroot\vsi 1\Queue (with a 'Browse...' button)
- Forward all mail with unresolved recipients to host: (empty)
- Buttons: OK, Cancel, Apply, Help